



# Book 288

## Yarn Usage Guide

**28801**

**PULLOVER**

**Sizes:** (2) 4 (6) 8 (10) 12 years

**Finished Measurements:**

Chest (65) 70 (75) 81 (86) 92 cm  
(26) 28 (30) 32 (34) 36 in

**Color Suggestion (FALK/HEILO):**

Col 1: 0007 Grey Heather/ 4018 Cherry Red  
Col 2: 0017 Off White/ 0017 Off White  
Col 3: 0083 Charcoal Heather/ 0090 Black

**Color Suggestion (DALE ALPAKKA):**

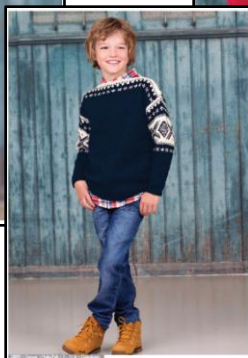
Col 1: 4435 Lilac  
Col 2: 0010 Off White  
Col 3: 4845 Purple

**Materials (FALK/HEILO):**

Col 1: (150) 200 (250) 300 (350) 400 g  
Col 2: (50) 50 (50) 50 (100) 100 g  
Col 3: (50) 50 (100) 100 (100) 100 g

**Materials (DALE ALPAKKA):**

Col 1: (150) 200 (200) 250 (250) 300 g  
Col 2: 50 g all sizes  
Col 3: (50) 50 (50) 100 (100) 100 g



**28802**

**PULLOVER**

**Sizes:** (2) 4 (6) 8 (10) 12 years

**Finished Measurements:**

Chest (68) 74 (79) 85 (90) 95 cm  
(27) 29 (31) 34 (36) 38 in

**Color Suggestion (FALK/HEILO):**

**Alt I:**  
Col 1: 4018 Cherry Red  
Col 2: 0017 Off White

**Alt II:**  
Col 1: 0090 Black  
Col 2: 0020 Natural

**Materials:**

**Alt I: (6) 8 (10) 12 years**  
Col 1: (250) 300 (350) 400 g  
Col 2: (150) 150 (200) 200 g  
**Alt II: (6) 8 (10) 12 years**  
Col 1: (300) 350 (400) 450 g  
Col 2: (100) 100 (100) 150 g

**Alt III:**  
For Sizes 2 and 4 years, the wide Border B is omitted on the sleeves and body:

**(2) 4 years**  
Col 1: (150) 200 g  
Col 2: (50) 50



**28803**

**PULLOVER and CARDIGAN**

**Sizes:** (2) 4 (6) 8 (10) 12 years

**Finished Measurements:**

**Pullover and Cardigan:**

Chest (62) 68 (74) 80 (86) 91 cm  
(25) 27 (29) 32 (34) 36 in

**Color Suggestion (DALETTA):**

**Pullover:**

Col 1: 4018 Cherry Red  
Col 2: 0020 Natural

**Cardigan:**

Col 1: 2671 Dark Taupe  
Col 2: 2425 Mist

**Materials Pullover or Cardigan:**

Col 1: (150) 150 (200) 200 (250) 250 g  
Col 2: (150) 150 (200) 200 (250) 250 g

**Accessories Cardigan:** 5-8 buttons



**28804**

**PULLOVER and CARDIGAN**

**Sizes:** (4) 6 (8) 10 (12) years

**Finished Measurements:**

Chest Pullover (69) 73 (76) 80 (84) cm  
(27) 29 (30) 32 (33) in  
Chest Cardigan (72) 76 (79) 83 (87) cm  
(28) 30 (31) 33 (34) in

**Color Suggestion (FALK/HEILO):**

**Pullover:**

Col 1: 0020 Natural  
Col 2: 2931 Light Sheep Heather  
Col 3: 3841 Med Sheep Heather

**Cardigan:**

Col 1: 0083 Charcoal Heather  
Col 2: 0004 Sand Heather  
Col 3: 0007 Grey Heather

**Materials:**

**Pullover:**

Col 1: (250) 250 (300) 300 (350) g  
Col 2: (100) 100 (100) 150 (150) g  
Col 3: (100) 100 (100) 100 (10) g

**Cardigan:**

Col 1: (250) 250 (300) 300 (350) g  
Col 2: (100) 100 (100) 150 (150) g  
Col 3: (100) 100 (100) 100 (100) g

**Accessories:** (5) 6 (6) 7 (7) buttons

**28806**

**PULLOVER**

**Sizes:** (2) 4 (6) 8 (19) 12 years

**Finished Measurements:**

Chest (60) 66 (73) 80 (86) 93 cm  
(24) 26 (29) 32 (34) 37 in

**Color Suggestion Boy:**

**Freestyle:**

Col 1: 0083 Charcoal  
Col 2: 5703 Pastel Blue  
Col 3: 0017 Off White

**Cotinga:**

Col 1: 5685 Slate  
Col 2: 5814 Carolina Blue  
Col 3: 0010 White

**Color Suggestion Girl:**

**Freestyle:**

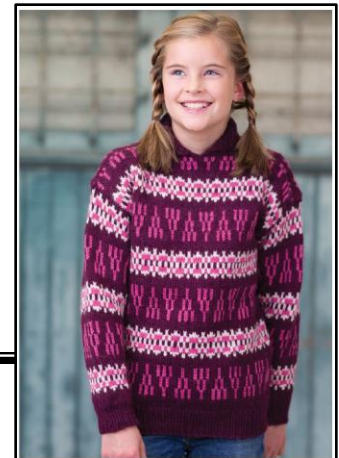
Col 1: 5072 Aubergine  
Col 2: 4617 Bright Pink  
Col 3: 0020 Off White

**Cotinga:**

Col 1: 4654 Tyrian Purple  
Col 2: 4627 Fantasy  
Col 3: 0020 Off White

**Materials:**

Col 1: (150) 200 (250) 250 (300) 350 g  
Col 2: (50) 50 (100) 100 (100) 150 g  
Col 3: (50) 50 (50) 50 (100) 100 g + 50 g for pullover w/ collar



**28805**

**PULLOVER**

**Sizes:** (2) 4 (6) 8 (10) 12 years

**Finished Measurements:**

Chest (63) 69 (75) 81 (88) 94 cm  
(25) 27 (30) 32 (35) 37 in

**Color Suggestion I:**

Col 1: 0020 Cream  
Col 2: 0004 Sand Heather

**Color Suggestion II:**

Col 1: 2931 Light Sheep Heather  
Col 2: 3841 Med Sheep Heather

**Materials:**

Col 1: (150) 200 (250) 300 (300) 350 g  
Col 2: (100) 100 (150) 150 (200) 200 g



Dale Garn

distributed exclusively in North America by Mango Moon

312 S Elm Street, Owosso, MI 48867

Phone 8559-MM-DALE

[www.dalegarnnorthamerica.com](http://www.dalegarnnorthamerica.com)